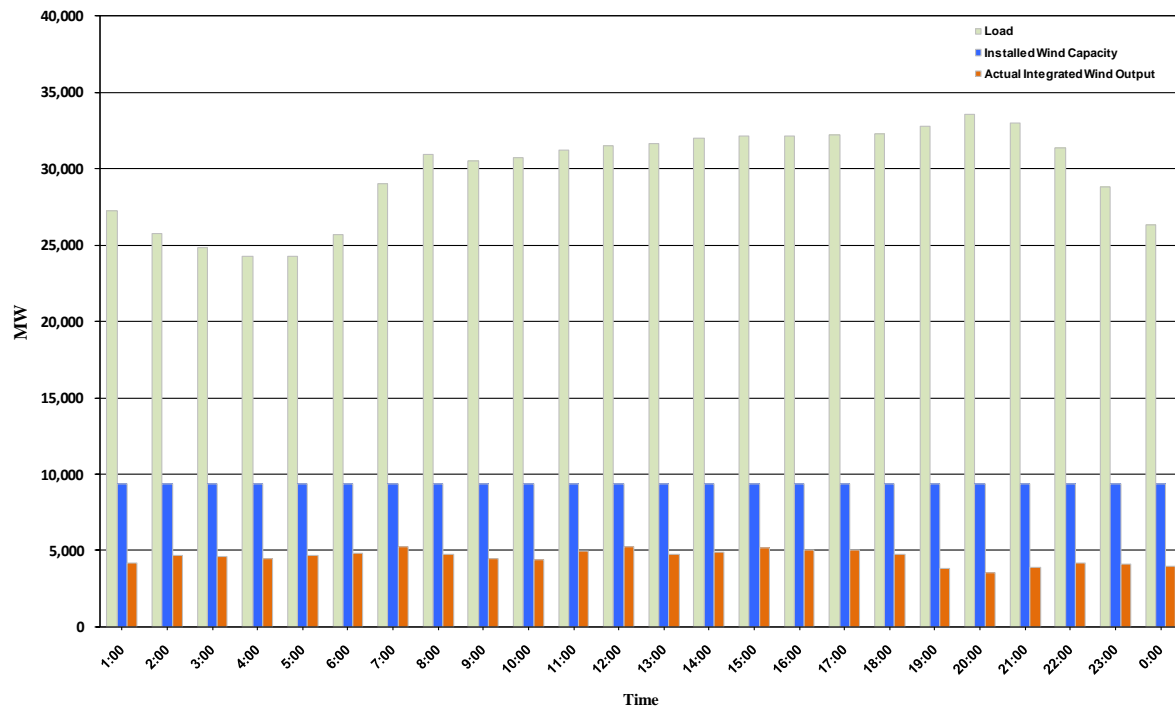




ERCOT Grid Operations Wind Integration Report: 11/02/10

| | |
|----------------------|-----------|
| Peak Load | 33,573 MW |
| Load Peak Hour | 20 |
| Wind Record 06/12/10 | 7016 MW |
| Max Wind value | 5495 MW |
| Wind Peak Hour | 11:37:00 |
| Wind Integration % | 17.40 |

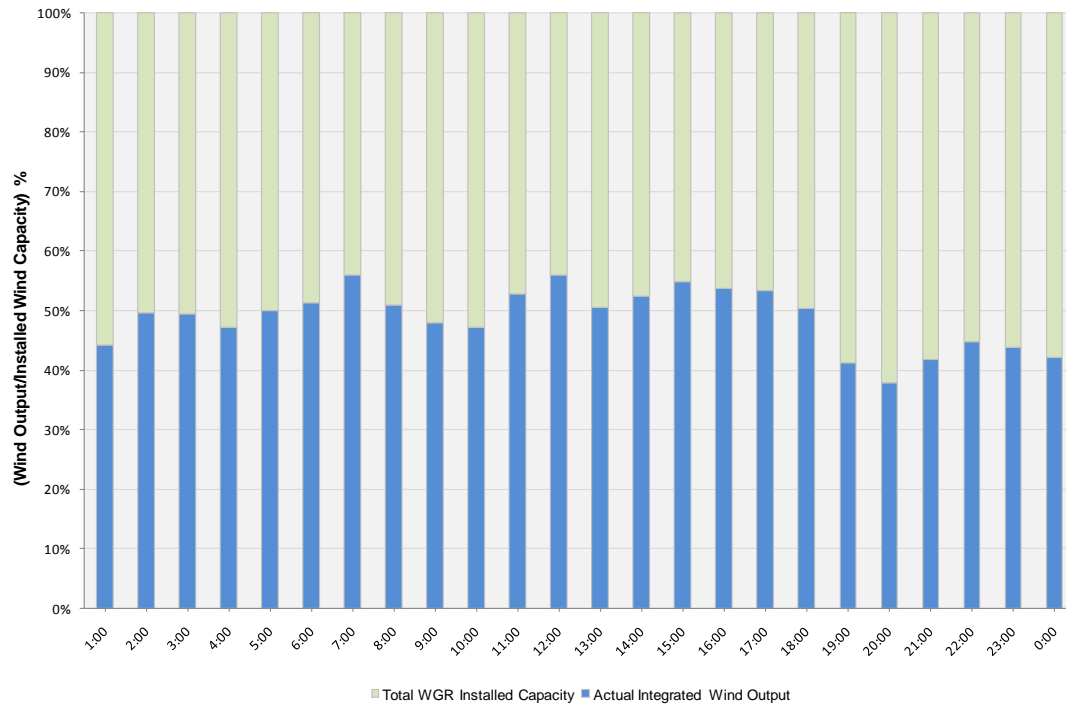
Hourly Average Actual Load vs. Actual Wind Output
11-02-2010





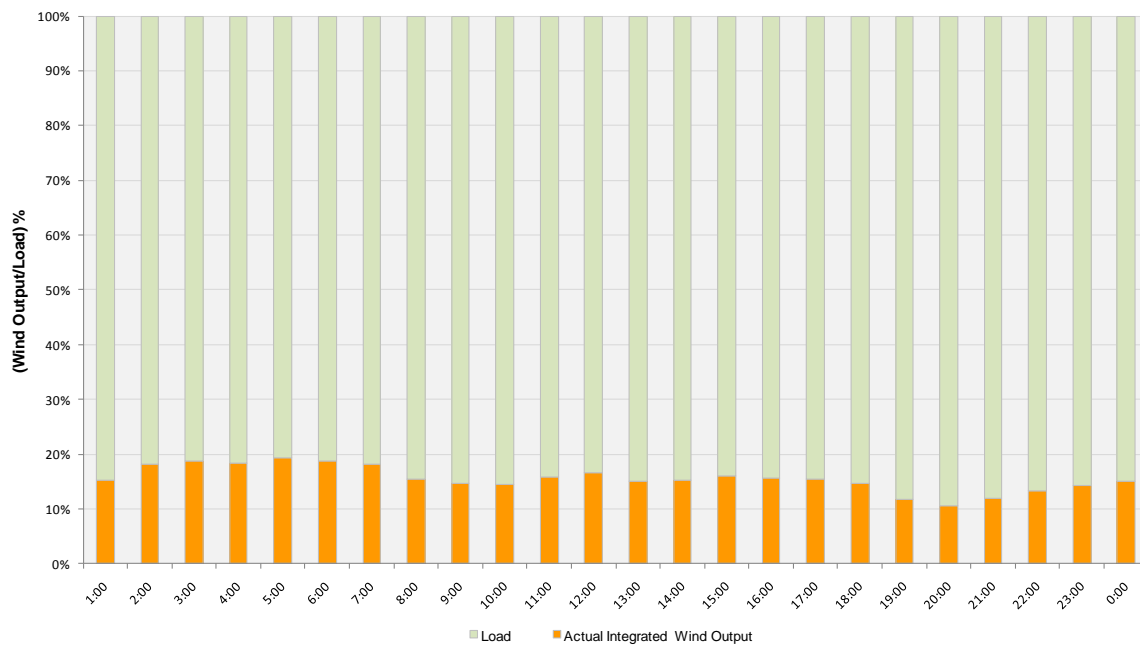
Actual Wind Output as a Percentage of the Total Installed Wind Capacity

11-02-2010



Actual Wind Output as a Percentage of the ERCOT Load

11-02-2010





ERCOT Load vs. Actual Wind Output 10/26/10 - 11/02/10

